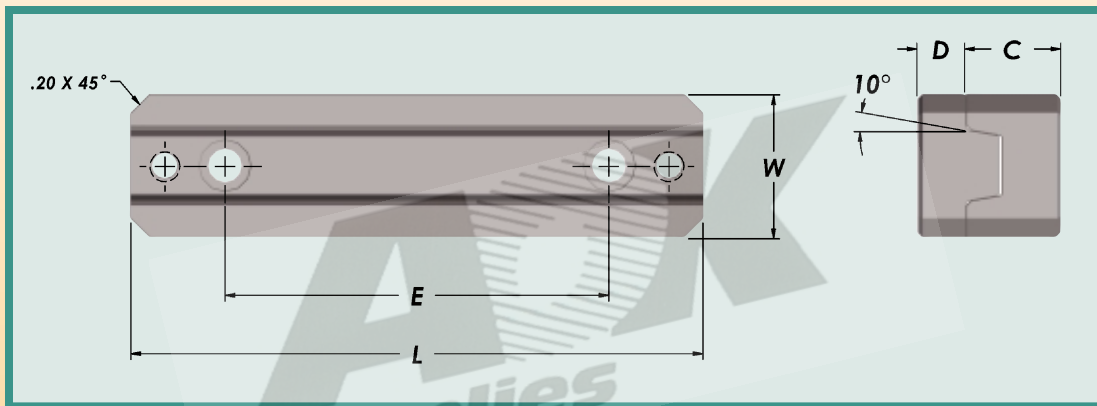
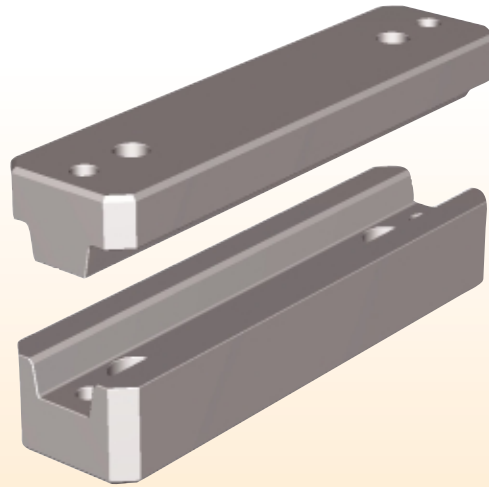




# Tapered Bar Locks

- DMS Tapered Bar Locks provide positive alignment between mold halves.
- They maintain alignment while allowing for thermal expansion.
- Made of 1045 steel hardened to 58-60 HRC.
- Male and Female mounting pockets should be accurately aligned, flat and parallel to the parting line.
- The pocket lengths should be long enough to provide clearance.



Catalog Number	L +.010 -.010	W +.000 -.001	D +.005 -.005	E +.005 -.005	S.H.C.S.	Jackscrew Thread
MTBL-2	1.980	.999	.312	-	#10-24	#10-24
MTBL-4	3.980	1.249	.375	2.500	1/4-20	1/4-20
MTBL-6	5.980	1.499	.500	4.000	5/16-18	5/16-18

Catalog Number	L +.010 -.010	W +.000 -.001	C +.005 -.005	E +.005 -.005	S.H.C.S.	Jackscrew Thread
FTBL-2	1.980	.999	.690	-	#10-24	#10-24
FTBL-4	3.980	1.249	.870	2.500	1/4-20	1/4-20
FTBL-6	5.980	1.499	1.000	4.000	5/16-18	5/16-18