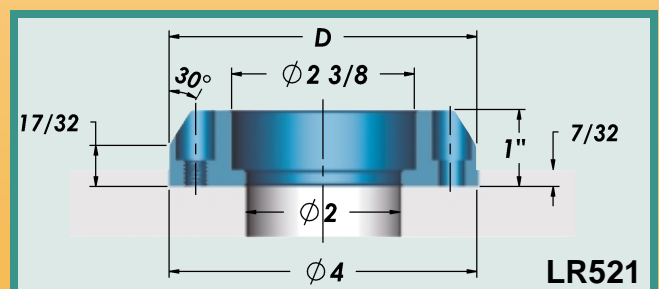
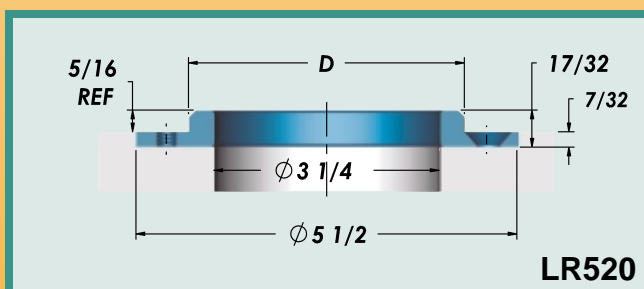
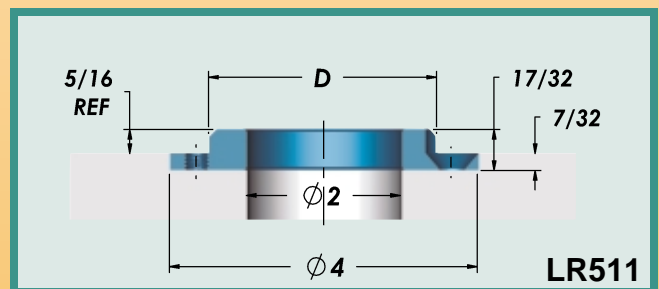
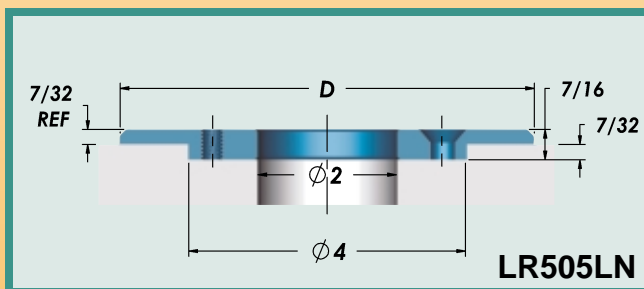
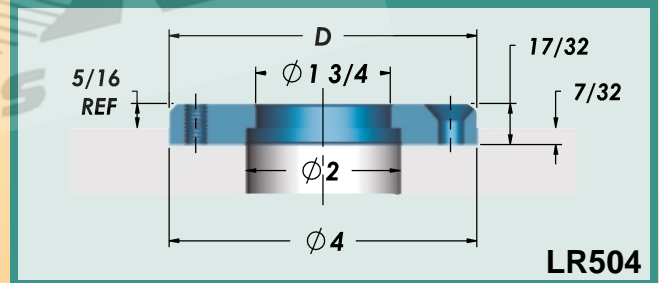
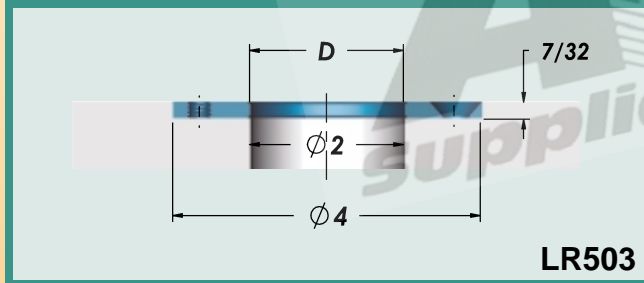
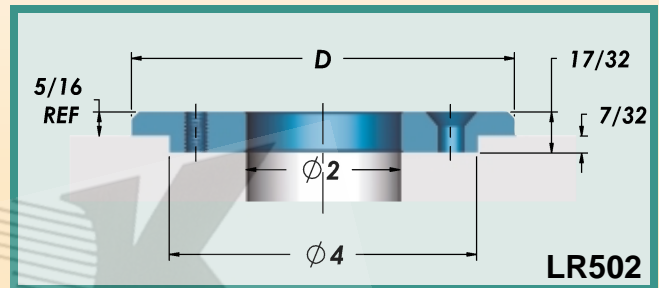
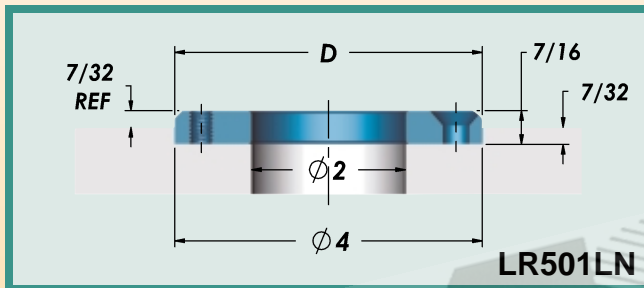
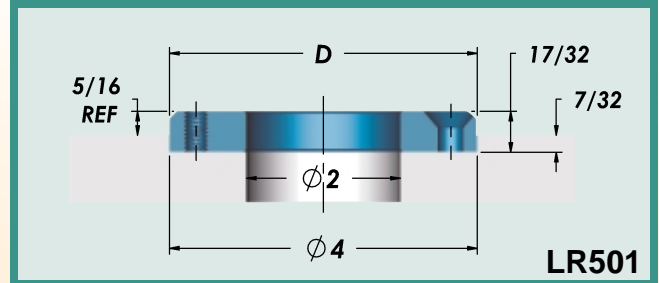
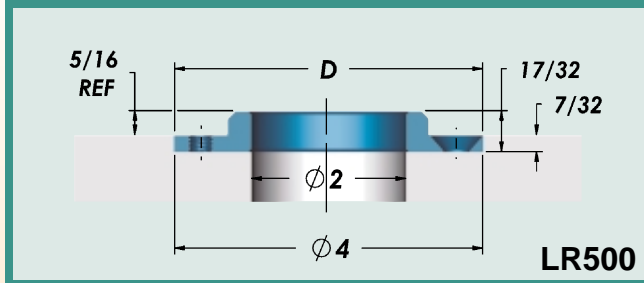




Locating Rings

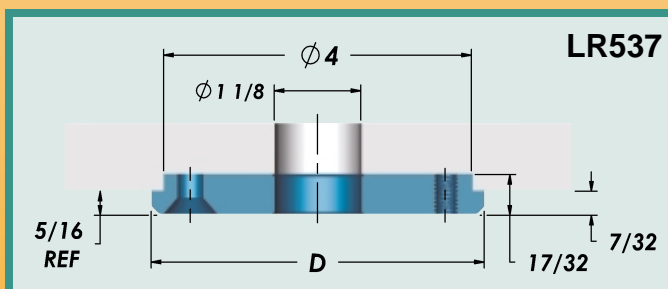
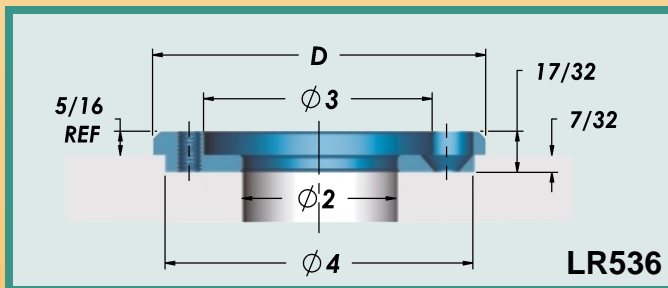
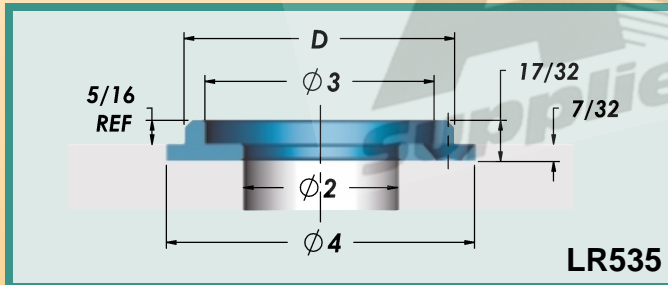
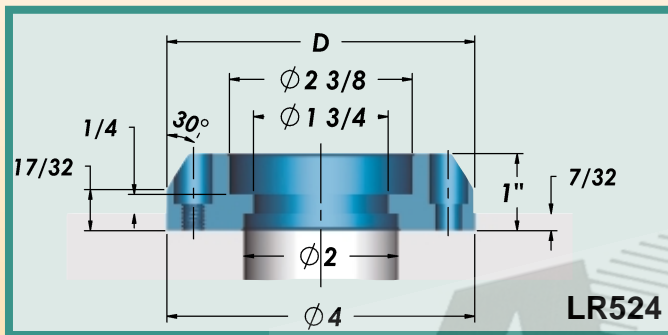
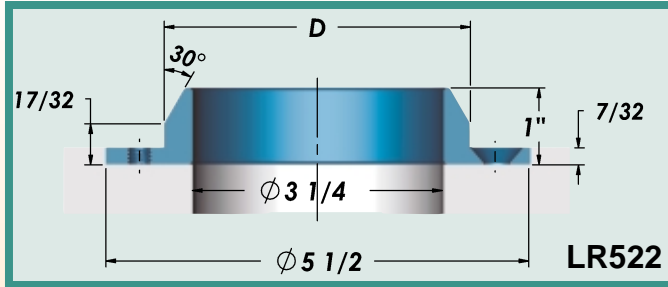
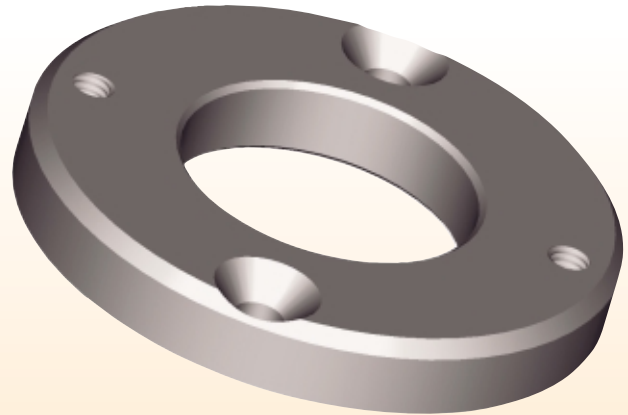
- LR521 and LR524 are supplied with two 5/16-18 Socket Head Cap Screws.

- All other Locating Rings are supplied with two 5/16-18 Flat Head Screws.





Locating Rings



| Catalog Number | D | Description |
|----------------|-------|---------------------------------------|
| LR500 | 2.615 | |
| LR501 | 3.990 | Standard Series |
| LR501LN | 3.990 | LN Series |
| LR502 | 4.990 | |
| LR503 | 2.000 | |
| LR504 | 3.990 | Clamp Type |
| LR505LN | 5.990 | LN Series |
| LR511 | 2.990 | |
| LR520 | 3.990 | Extension Nozzle Type |
| LR521 | 3.990 | Standard Series - Extra Lead In |
| LR522 | 3.990 | Extension Nozzle Type - Extra Lead In |
| LR524 | 3.990 | Clamp Type - Extra Lead In |
| LR535 | 3.541 | |
| LR536 | 4.331 | Top Ring |
| LR537 | 4.331 | Bottom Ring |